



UDC 622.550.8.02

Article / Статья

© PNRPU / ПНИПУ, 2020

Conceptual Geological Modelling based on Lithological and Petrographic Studies (The Case of the Permo-Carboniferous Deposit of the Usinskoye Field)

Ivan S. Putilov, Ekaterina E. Vinokurova, Anastasiia A. Guljaeva, Aleksey L. Yuzhakov, Nikita A. Popov

PermNIPIneft branch of LUKOIL-Engineering LLC in Perm (3a Permskaya st., Perm, 614015, Russian Federation)

Создание концептуальной геологической модели, основанной на литолого-петрографических исследованиях, на примере пермокарбонатной залежи Усинского месторождения

И.С. Путилов, Е.Е. Винокурова, А.А. Гуляева, А.Л. Южаков, Н.А. Попов

Филиал ООО «ЛУКОЙЛ-Инжиниринг» «ПермНИПИнефть» в г. Перми (Россия, 614015, г. Пермь, ул. Пермская, 3а)

Received / Получена: 10.02.2020. Accepted / Принята: 15.06.2020. Published / Опубликовано: 17.08.2020

Keywords:

Description of thin sections, conceptual model, Dunham classification, lithotype, facies zone, geological modelling, sequence stratigraphy, sedimentation, carbonate shoal, organogenic buildup, shallow marine shelf plain.

The work intends to develop a conceptual model of the Permo-Carboniferous deposit of the Usinskoye field. In the furtherance of this goal, the authors have addressed the tasks of designing a specialised table format to describe thin sections of carbonate core samples and create a database based on the developed format for the subsequent analysis. The paper deals with studying the Permo-Carboniferous deposit of the Usinskoye field, located in the Komi Republic. A unique database of 1,710 described thin sections from 12 wells was created based on the developed format. The classification of carbonate rocks by R.J. Dunham supplemented by Embry and Kloven (based on the dominating fabric in limestone, type of cementing agent and their relationships in the rock) was used as a basis. According to rock material compositions and textural properties, the following nine rock lithotypes were identified: Mudstone, Wackestone, Packstone, Grainstone, Boundstone, Floatstone, Rudstone, Crystalline Carbonate (Dolomite), and Clayey Carbonate Silicite. By following the rock lithology type identification results and the seismic data, three main facies zones were determined in the section of the mid-Carboniferous and Lower Permian sediments: carbonate shoal (inner ramp zone), organogenic buildup (middle ramp zone) and shallow marine shelf plain (mid-ramp zone, partially outer ramp zone). A moderately deep marine shelf plain facies (outer ramp zone) was provisionally defined.

Following the study results, two profiles of the Mid-Carboniferous and Lower Permian sediments of the Usinskoye field were plotted along two well lines. The presented sections support the conceptual model developed. Based on the core sample findings, the zone of organogenic build-ups stands out in the eastern part of the field, dating back predominantly to the Late Carboniferous and Early Permian periods. An inner ramp with the carbonate shoal facies supposedly exists in the field north-west.

The conducted work has resulted in the development of a conceptual model of the Permo-Carboniferous deposit of the Usinskoye field, which can be used for further development of more reliable 3D facies models, commercial-scale estimations of reserves and field development designs.

Ключевые слова:

описание шлифов, концептуальная модель, классификация по Данему, литотип, фациальная зона, геологическое моделирование, сиквенс-стратиграфия, седиментация, карбонатная отмель, органогенная постройка, мелководно-шельфовая равнина.

Рассматривается создание концептуальной модели пермокарбонатной залежи Усинского месторождения. Для достижения поставленной цели решаются задачи по разработке специализированного табличного формата описания шлифов ядра карбонатных отложений, формирование базы данных на основе разработанного формата для последующего анализа. В качестве объекта исследования выбрана пермокарбонатная залежь Усинского месторождения, расположенного в Республике Коми. По разработанному формату сформирована уникальная база данных по 1710 описанным шлифам из 12 скважин. За основу принята классификация карбонатных пород по Р.Х. Данему с дополнениями Эмбри и Кловена (по преобладанию в известняке структурных компонентов, типу цементирующего вещества, а также их взаимоотношению в породе). На основе вещественного состава породы и структурного параметра выделено девять литотипов пород: мадстоун, вакстоун, пакстоун, грейнстоун, баундстоун, флаустоун, рудстоун, кристаллический карбонат (доломит), глинисто-карбонатно-кремнистая порода. По результатам определенных литологических типов пород и данным сейсмозаписки в разрезе среднекаменноугольно-нижнепермских отложений выделены три основные фациальные зоны: карбонатная отмель (зона внутреннего рампа); органогенная постройка (зона среднего рампа); мелководно-шельфовая равнина (зона среднего рампа, частично зона внешнего рампа). Дополнительно выделена фашия умеренно-глубоководной шельфовой равнины (зона внешнего рампа).

В результате проведенных исследований построены два профиля каменноугольно-нижнепермских отложений Усинского месторождения по двум линиям скважин. Представленные разрезы подтверждают построенную концептуальную модель. По данным исследования ядра в восточной части месторождения хорошо выделяется зона органогенных построек, образование которых происходило преимущественно в позднекаменноугольное и раннепермское время. В северо-западной части месторождения предполагается существование внутреннего рампа с фашиями карбонатной отмели.

В результате проведенной работы построена концептуальная модель пермокарбонатной залежи Усинского месторождения, которая может быть использована для последующего построения более достоверных трехмерных фашиальных моделей, промышленного подсчета запасов и проектирования разработки месторождений.

Ivan S. Putilov (Author ID in Scopus: 2572377700) – Doctor of Engineering, Deputy Director of the Branch for Scientific Work in the Field of Geology (tel.: +007 342 233 64 58, e-mail: Ivan.Putilov@pnn.lukoil.com).

Ekaterina E. Vinokurova – Chief Specialist of the Division of Lithology and Stratigraphy of the Department for Comprehensive Core Research of the Center for Core and Formation fluid Research (tel.: +007 342 233 64 99, e-mail: Ekaterina.Vinokurova@pnn.lukoil.com).

Anastasiia A. Guljaeva – 2nd category Engineer of the Division for Estimation of the Reserves of the Northern group fields of the Volga-Ural region (tel.: +007 342 233 64 91, e-mail: Anastasiia.Guljaeva@pnn.lukoil.com). The contact person for correspondence.

Aleksey L. Yuzhakov – Junior Researcher of the Petrophysical Modeling Department (tel.: +007 342 233 63 59, e-mail: Alexey.Yuzhakov@pnn.lukoil.com).

Nikita A. Popov (Author ID in Scopus: 56088494600) – Head of the Department for Comprehensive Core Research of the Center for Core and Formation Fluid Research (tel.: +007 342 717 01 57, e-mail: Nikita.Popov@pnn.lukoil.com).

Путилов Иван Сергеевич – заместитель директора филиала по научной работе в области геологии, доктор технических наук (тел.: +007 342 233 64 58, e-mail: Ivan.Putilov@pnn.lukoil.com).

Винокурова Екатерина Евгеньевна – главный специалист отдела литологии и стратиграфии Управления комплексных исследований ядра Центра исследования ядра и пластовых флюидов (тел.: +007 342 233 64 99, e-mail: Ekaterina.Vinokurova@pnn.lukoil.com).

Гуляева Анастасия Андреевна – инженер II категории отдела подсчета запасов северной группы месторождений Волго-Уральского региона (тел.: +007 342 233 64 91, e-mail: Anastasiia.Guljaeva@pnn.lukoil.com). Контактное лицо для переписки.

Южаков Алексей Леонидович – младший научный сотрудник отдела петрофизического моделирования (тел.: +007 342 233 63 59, e-mail: Alexey.Yuzhakov@pnn.lukoil.com).

Попов Никита Андреевич – начальник Управления комплексных исследований ядра Центра исследования ядра и пластовых флюидов (тел.: +007 342 717 01 57, e-mail: Nikita.Popov@pnn.lukoil.com).

Introduction

This work is intended to develop a conceptual geological model as illustrated by the Permo-Carboniferous deposit of the Usinskoye field using the lithological and petrographic findings. The model is based on the Dunham rock texture classification that reflects the rock deposition conditions.

Experimental Procedure

The studies deal with the Permo-Carboniferous deposit of the Usinskoye field, located in the Komi Republic. The deposit is unique in its size and properties ($\mu = 723.2$ mPa·s). The oil-saturated layer exceeds 300 m, the volume of AB1 geological reserves is 747 million tonnes, and the recoverable reserves make up 247 million tonnes. More than 2,000 wells were drilled in the field, we chose 30 of them to select over 2,000 m of the core material, which was used to make approximately 9,000 standard and over 1,000 full-size core samples that were later used for laboratory tests. For the Usinskoye field reservoirs, it is of particular importance to conduct studies on both standard and full-diameter core samples, as they most accurately reflect flow patterns of reservoir processes [1-19]. Only laboratory-based core studies give an opportunity to directly obtain such information [20-22]. Furthermore, approximately 3,000 thin sections were made and described.

Description of sections is a specific and time-consuming process, while the description itself is presented in the form of a consecutive textual specification and, as it should be noted, the descriptions by various authors may differ in style and terminology, which complicates their further use for operational data analysis and statistical researches.

To address this issue and categorise the representation of descriptions of the carbonate sedimentary thin sections, a team of specialists from PermNIPIneft, the branch of OOO LUKOIL-Engineering, has developed a specialised table format with coding of the most relevant parameters determined in the thin sections. The key parameters included in the table were the rock family, presence of organic matter, grains, fabric, Dunham texture, predominant authigenous constituents affecting porosity and permeability, measured porosity of the thin

section, the prevalent type of porosity, fracturing and stylization. The developed format made it possible to present all textual descriptions of the rock petrographic characteristics in the table form, which provides a range of advantages. Firstly, it is instrumental in the mathematical and statistical analysis of the thin section descriptions. Secondly, it offers a tool to create a database for analysis using findings of different authors, including images of thin sections. Thirdly, it enables us to analyse and compare the thin section parameters with other core sample findings.

By using the case of the Permo-Carboniferous deposit of the Usinskoye field, we created a unique database of 1,710 described thin sections from 12 wells based on the developed format.

For the subsequent lithologic facies analysis and the deposit conceptual geomodelling, the sediments were lithologically differentiated into classes. The structural-genetic classification of carbonate rocks by R.J. Dunham supplemented by Embry and Kloven (based on the dominating fabric in limestone, type of cementing agent and their relationships in the rock) was selected as the key parameter to define lithology of the studied sediments, in addition to the rock material composition). Based on the rock material composition and textural properties, the following nine rock lithotypes were identified: Mudstone, Wackestone, Packstone, Grainstone, Boundstone, Floatstone, Rudstone, Crystalline Carbonate (Dolomite), and Clayey Carbonate Silicite. Figure 1 shows images of the rock thin sections illustrating the facies deposition zones of the Permo-Carboniferous deposit of the Usinskoye field.

Figure 2 shows an analysis of lithotype distribution over a well that is the most typical of various facies zones.

Three main facies zones were identified in the section of the Mid-Carboniferous and Lower Permian sediments, according to the rock lithology type definition results and the seismic data:

- carbonate shoal (inner ramp zone, Fig. 2, *a*)
- organogenic buildup (mid-ramp zone, Fig. 2, *b*)
- shallow marine shelf plain (mid-ramp zone, partially outer ramp zone Fig. 2, *c*)

Additionally, we can define such facies, as moderately deep marine shelf plain (outer ramp zone).

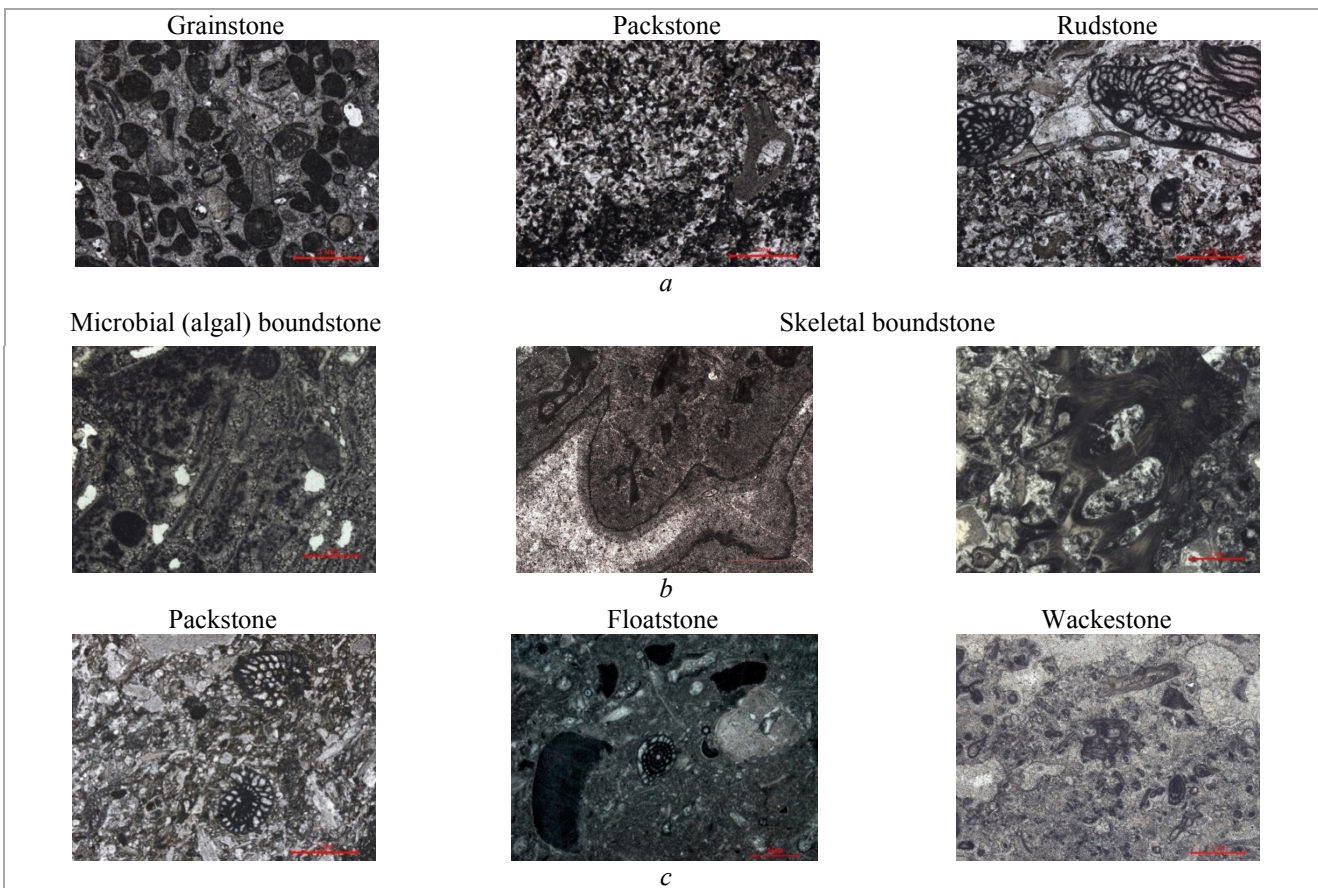


Fig. 1. Images of thin sections typical of facies zones: *a* is carbonate shoal facies zone; *b* is organogenic buildup facies zone (mid-ramp zone); *c* is shallow marine shelf plain facies zone (mid-ramp zone, partially outer ramp zone)

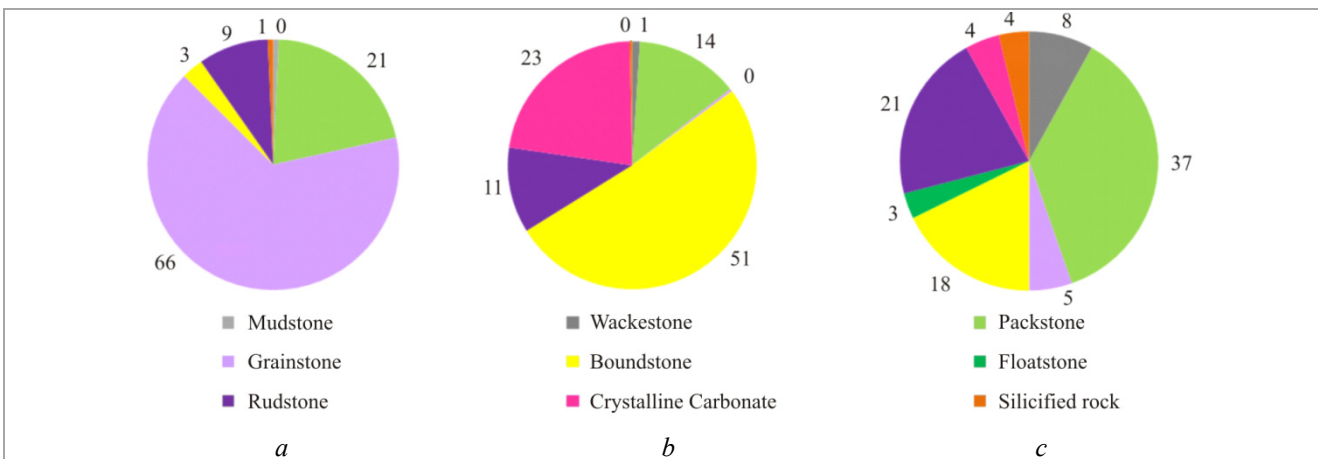


Fig. 2. Most typical well distribution (%) of lithotypes for different facies zones: *a* is carbonate shoal (inner ramp zone); *b* are organogenic buildups (mid-ramp zone); *c* is shallow marine shelf plain (mid-ramp zone, partially outer ramp zone)

In the Carboniferous and Lower Permian period, the deposition of sediments in the region occurred in shallow marine shelves with the prevalent carbonate, clayey carbonate (less frequently) and sulphate carbonate (for the Mid-Carboniferous period) sedimentation.

According to the regional geological surveys of the Timan-Pechora region (works by V.A. Zhemchugova, N.I. Nikonov et al.), an extensive carbonate ramp gently descending eastwards was located within the Pechora Plate during the Carboniferous and Permian periods.

The Usinskoye field sediments were mainly formed in the inner and mid-ramp zone. Further to the seafloor paleosurface of that time, the fair-weather and storm-wave base actions were the primary factors affecting sedimentation. The sedimentation took place as deep as the first dozens of metres.

The carbonate shoal facies (inner ramp area) is above the fair-weather wave action level, where sediments accumulated from moving shallow waters. It is mainly composed of bioclastic oolitic limestone, sparitic cement (grainstone/rudstone/packstone), while the mud fraction of the sediments was washed away. The facies is defined for all the field locations of the Permo-Carboniferous deposit.

According to V.A. Zhemchugova, organogenic buildups of the Pechora basin, which are the Late Carboniferous and Early Permian by their morphology and environmental evolution, pertain to mounds (as termed by James, Bourque, 1992). Unlike classical reefs, they lack typical massive skeletal organisms, backshelves and foreshelves, their development has been completed at the pioneer stage of the paleo-ecological succession.

By their paleo-ecological formation features and composition, there are two types of buildups: microbial (mud, algal) mounds and skeletal mounds.

The skeletal mounds are mainly formed on seafloor small elevations, with currents and waves washing out fine mud sediments from the buildups. Such organogenic buildups are composed mostly of crinoid bryozoan, bryozoan crinoid, algal crinoid, algal paleo-aplesine boundstone and the accompanying bioclastic rocks formed from the boundstone destruction.

Affected by waves on both sides of the buildup, interbioherm and shelf sediments containing the multisized bioclastic material (polybioclastic limestone) were accumulated.

Microbial (mud) mounds, mainly formed by phylloid algal, cyanobacterial algal bindstone (boundstone) and polybioclastic biocementolite, are able to expand in zones different in sea bottom topography and hydrodynamics.

At the Usinskoye field, the facies of organogenic buildups is determined in the Late Carboniferous and Lower Permian sediments. Its distribution area gravitates towards to the tops of the paleo-uplifts of the Usinskoye structure and is oriented to the north-west. The deposits of the facies of organogenic buildups exhibit increased thicknesses.

The facies of the shallow marine shelf plain is determined on a provisional basis. The sediments were formed in the mid-ramp zone, with weak hydrodynamics, below the fair-weather wave action level. The sediments are dominated by bioclastic, bioclastic micritic and micritic bioclastic limestone (packstone/floatstone/wackestone), with possible interlayers of grainstone/rudstone.

The facies of the moderately deep marine shelf plain is represented by clayey micritic limestone with rare bioclast (wackestone/mudstone) and argillite. Following the core sample analysis data, the rocks of this facies can be found only in few samples. The facies are clearly mappable by low thicknesses, mostly low porosity and permeability.

The rocks classified as crystalline carbonate lithotype, represented by dolomite, are defined in the section. The secondary dolomites are micro-fine and fine grained, calcareous, generally defined in the Mid-Carboniferous depositions. The primary fabric of the rocks is mostly undefined.

The rock dolomitization resulted from the impact of magniferous water on limestone, its calcite turning into dolomite until limestone is completely substituted by dolomite. Observed is the dolomitization of two generations: diagenetic and epigenetic. During the diagenetic dolomitization, dolomite is present as separate rhombohedral and irregular rhombohedral crystals immersed in the rock substrate. In this case, dolomitization has no significant impact on porosity and permeability of the rocks. During epigenetic and metasomatic dolomitization, dolomite significantly or completely replaces primary rocks, forming secondary dolomites, often accompanied by a complete rearrangement of the rock fabric and resulting in significant intercrystalline and dissolution porosity, thus improving the rock porosity and permeability.

Silification zones are observed along detritic limestone in the core samples of wells. Carbonate of organic remains is replaced by silica: the coarse-grained calcite or dolomite is usually replaced by coarser crystalline quartz, while the fine-grained calcite or dolomite is usually replaced by finer crystalline quartz, accordingly.

Figure 3 shows a detailed conceptual model of the structure of the Carboniferous and Lower Permian sediments of the Usinskoye fields, which reflects the deposit formation genesis.

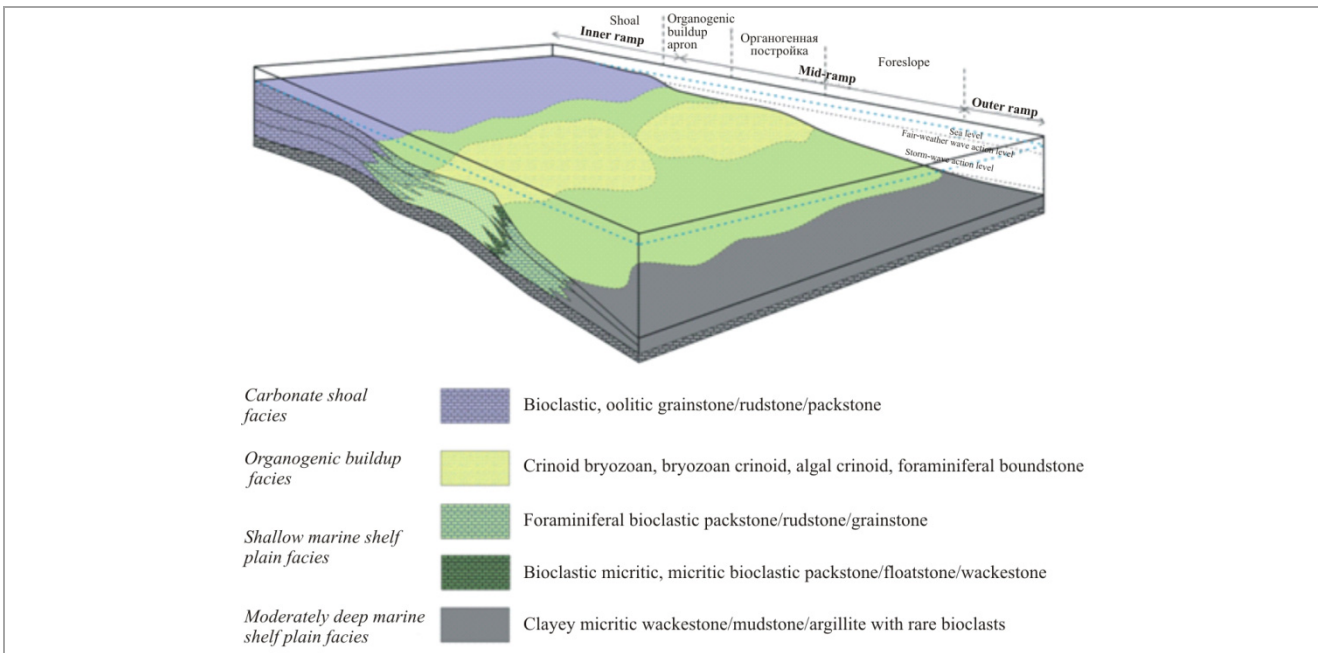


Fig. 3. Conceptual structural model of the Carboniferous and Lower Permian deposits of the Usinskoye field

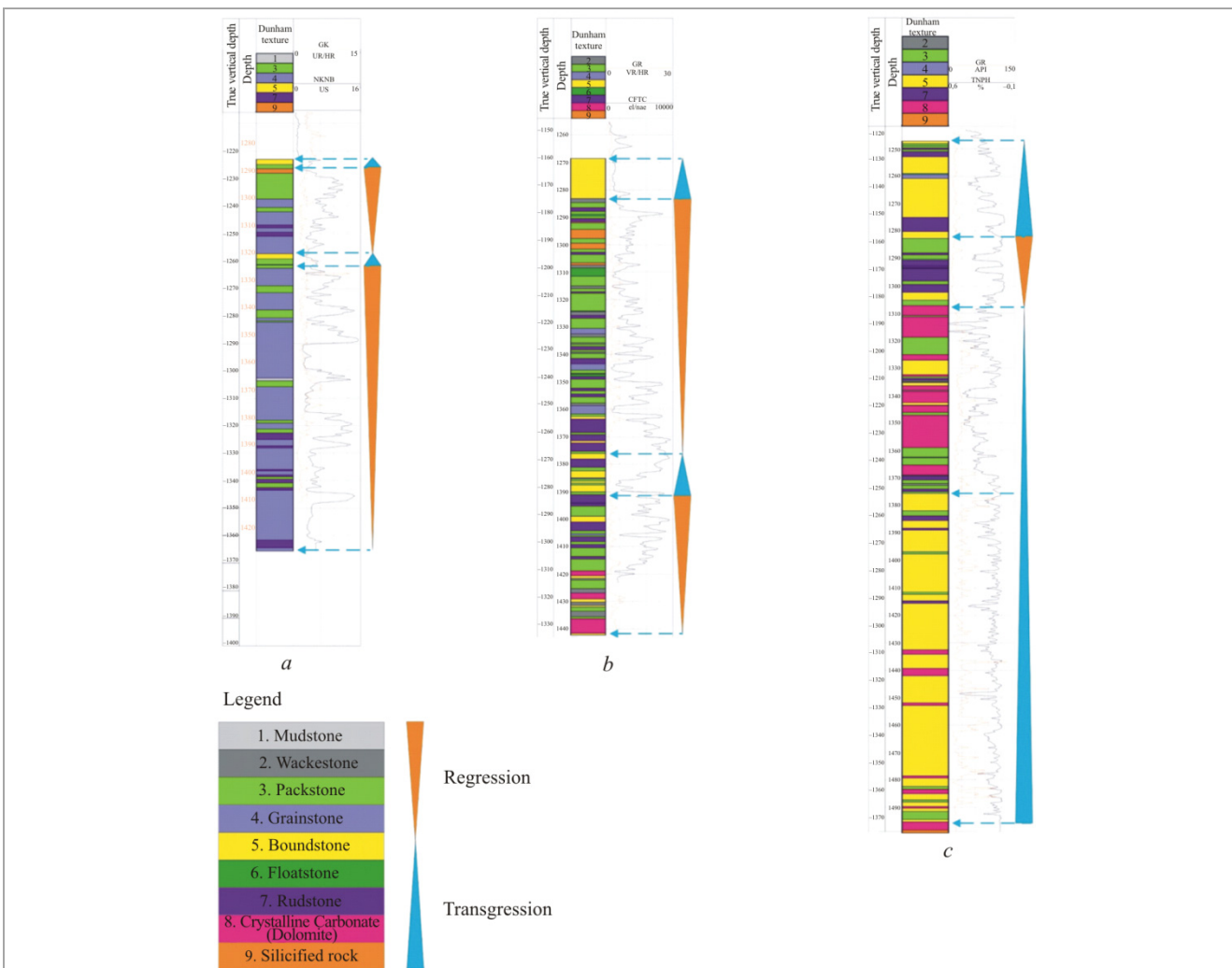


Fig. 4. Section of wells with defined facies zones: *a* is carbonate shoal facies zone (inner ramp zone); *b* - shallow marine shelf plain facies zone (organogenic buildup apron); *c* - organogenic buildups facies zone (mid-ramp zone)

As a result of the conducted studies, two geological profiles of the Carboniferous and Lower Permian deposits of the Usinskoye field were developed, aligned to the regional reference *benchmark* R4 corresponding to the top of the field bench of the 3rd Moscovian stage.

The presented sections confirm the developed conceptual model. Figure 4 shows the well section, most typical of the defined facies zones. Following the core sample findings, a zone of organogenic buildups is well distinguished in the east of the field; such build-ups were formed largely in the Mid-Late Carboniferous and Early Permian periods. It is supposed that in the north-west of the field, there is an inner ramp with carbonate shoal facies.

Sedimentation during the Carboniferous and Early Permian periods occurred with slight sea level fluctuations. Based on the core study results, up to two second-order sequences in the carboniferous Middle and Upper Carboniferous deposits and one sequence in the Lower Permian deposits can be defined. The sequences consist of a transgressive system tract and highstand system tract. The sediments of a lowstand system tract are not common in the sections under study.

During a relative rise and high stand of the sea level, organogenic buildups were formed and growing, which corresponds to the stage of stabilisation and accumulation.

While an organogenic buildup was moved to the sea level, when the sea level stabilised or slightly lowered, the buildup was destroyed, and organogenic clastic sediments were formed (destruction stage).

The ideal sequence consists of sediments from shallow marine shelf plains passing into carbonate shoal sediments, and then into facies of organogenic buildups. The section is ended by sediments of subaerial exposition (breccia, paleokarst, etc.).

Application of Section Analysis in 3D Modelling

As part of the development of a digital 3D geological model of the Permo-Carboniferous deposit, a conceptual model of the Usinskoye field was built using a data set based on the results of the core sample analysis, geophysical studies of wells and interpretation of 3D seismic data [23]. The earlier conceptual model reflects essential geological principles of the productive sediment structure. Thus, now we have everything needed

for the conceptual model development using 3D modelling [24].

The following kinds of data were input into the geomodelling software system as a base for the conceptual model development:

- boundaries of the facies zones identified during the interpretation of 3D seismic data (identified for four main formations)

- lithotypes identified as per the Dunham classification for 12 wells located in the Permo-Carboniferous deposit

- constructional surfaces of reflecting horizons.

Subject to the seismic surface analysis, a reference structural tectonic model the Permo-Carboniferous sediments was built, which consists of four layers.

Based on the structural and tectonic framework of the four layers, a 3D grid with a lateral cell size of 100×100 m was built for conceptual modelling. A grid was selected with an even cell width [25-27]. For each formation within a 3D grid, a discrete parameter was obtained on distribution of the facies zones defined based on the 3D seismic data interpretation results. A unique discrete index was assigned to each facies zone. Since the boundaries of the facies zones are determined laterally only, it was chosen to use Indicators Belts method for the uniform, realistic vertical change in the boundaries of the defined facies zones. The result of the facies zone distribution is a 3D facies parameter (Facies) that most accurately reflects the form and nature of distribution of the facies types in question.

The initial lithotypes data were input in Las file format as the well information. The lithotypes were transferred to the grid cell using the well data averaging function, which allowed us to obtain values of lithotypes in the cube within the well path. Further, using stochastic modelling, discrete lithotype values were distributed across the wells within each facies zone. The final parameter of the 3D distribution of lithotypes in the interwell space subject to the facies zones was obtained (Fig. 5), reflecting the general concept of sedimentation.

The data in Figure 5 illustrate the change of different types of sections, controlled by the change of facies zones and represented by characteristic combinations of lithotypes.

The resulting 3D cube of lithotypes can be used at further stages of three-dimensional modelling of porosity and permeability properties

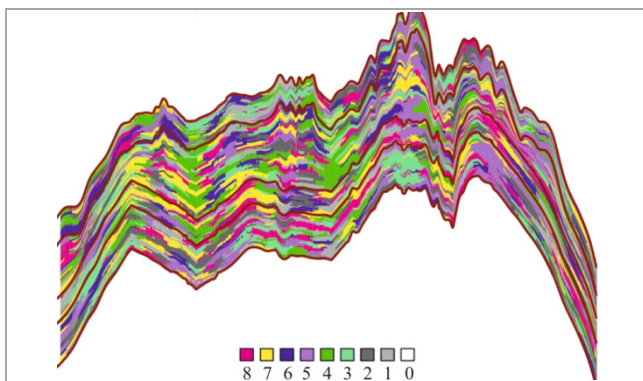


Fig. 5. Final distribution of lithotypes in the 3D grid of the Permo-Carboniferous deposit of the Usinskoye field: 0 is the buildup outside the formation; 1 is Mudstone; 2 is Wackestone, 3 is Packstone, 4 is Grainstone, 5 is Boundstone, 6 is Floatstone, 7 is Rudstone, 8 is Crystalline Carbonate

of reservoir rocks, specifically, as an additional parameter in the distribution of the oil saturation factor of the Permo-Carboniferous deposit.

Conclusions

A database of thin section descriptions of the Permo-Carboniferous deposit of the Usinskoye field has been generated in a specialized format. The generated database was used as a database for a comprehensive analysis of the thin sections of the Permo-Carboniferous deposit of the Usinskoye field aimed at building more reliable three-dimensional models, commercial-scale estimations of reserves and field development designs.

A detailed conceptual model of the structure of the Carboniferous and Lower Permian deposits of the Usinskoye field was built based on 1,710 thin section descriptions, well logging and 3D seismic data.

The applied approach to creating the 3D conceptual model of the Permo-Carboniferous deposit of the Usinskoye field was based on the generalised geological and geophysical data subject to lithotypes identified as per the Dunham classification.

References

1. Gubaidullin M.G., Belozero I.P., Iur'ev A.V. Eksperimental'nye issledovaniia otositel'nykh fazovykh pronitsaemosti i koeffitsienta vytesneniia nefi vodoi v slozhnopostroennykh kollektorakh [Experimental study of relative phase permeability and factors of oil replacement by water in complicatedly-composed reservoirs]. *Geologiya, geofizika i razrabotka nefiannykh i gazovykh mestorozhdenii*, 2017, no. 2, pp. 49-52.
2. Dmitriev M.N., Kadet V.V., Kravchenko M.N., Rossokhin S.G. Dvukhfaznaia fil'tratsiia v transversal'no-izotropnoi poristoii srede. Teoriia i eksperiment [Two-phase filtration a transversally isotropic

porous medium: Experiment and theory]. *Izvestiia Rossiiskoi akademii nauk*, 2004, no. 4, pp. 92-97.

3. Dmitriev N.M., Kuz'michev A.N., Mikhailov N.N., Maksimov V.M. Eksperimental'noe izuchenie fil'tratsionnykh svoystv anizotropnykh kollektorov uglevodorodnogo syr'ia [Experimental study of filtration properties of hydrocarbons anisotropic fields]. *Burenie i nef't*, 2015, no. 11, pp. 6-9.

4. Zheltov Iu.V., Kudinov V.I., Malofeev G.E. Razrabotka slozhnopostroennykh mestorozhdenii viazkoi nefi v karbonatnykh kollektorakh [Development of complex viscous oil fields in carbonate reservoirs]. Moscow: *Neft' i gaz*, 1997, 387 p.

5. Zainutdinov R.S. Sovershenstvovanie metoda opredeleniia ostatochnoi neftenasyshchennosti plastov po kernu dlia otsenki koeffitsientov vytesneniia nefi vodoi [Improvement of the method for determining the residual oil saturation of formations with core to estimate the coefficients of oil displacement by water]. Abstract of Ph. D. thesis. Ufa, 1998, 162 p.

6. Zubkov M.Iu., Mikulina O.I., Pushin A.V. Rezul'taty issledovaniia otositel'nykh fazovykh pronitsaemosti raznovozrastnykh produktivnykh otlozhenii Krasnoleninskogo mestorozhdeniia [Results of studies of the relative phase permeabilities of different-age productive deposits of the Krasnoleninskoye field]. *Vestnik nedropol'zovaniia Khanty-Mansiiskogo avtonomnogo okruga*, 2012, no. 25, pp. 42-52.

7. Masket M. Techenie odnorodnykh zhidkostei v poristoii srede [The flow of homogeneous fluids in a porous medium]. Moscow: NITs "Reguliarnaia i khaoticheskaia dinamika", 2004, 629 p.

8. Mikhailov N.N., Dzemesiuk A.V., Kol'chitskaia T.N., Semenova N.A. Izuchenie ostatochnogo neftenasyshcheniia razrabatyvaemykh plastov [Study of the residual oil saturation of the developed formations]. Moscow: VNIOENG, 1990, 59 p.

9. Tul'bovich B.I. Metody izucheniia porod-kollektorov nefi i gaza [Methods for studying oil and gas reservoir rocks]. Moscow: Nedra, 1979, 301 p.

10. Khaireidinov N.Sh., Gubaidullin A.A., Iudintsev E.A., Blinov S.A. Nekotorye rezul'taty otsenki vliianiia sposobov ekstraksii neftenasyshchennykh karbonatnykh porod na ikh kollektorskie svoystva [Some results of assessing the impact of methods for the extraction of oil-saturated carbonate rocks on their reservoir properties]. *Trudy Tatarskogo nauchno-issledovatel'skogo i proektного instituta nefi*. Bugul'ma, 1987, no. 60, pp.103-109.

11. Shvanov V.N., Frolov V.T., Sergeeva E.I. Sistematika i klassifikatsiia osadochnykh porod i ikh analogov [Systematics and classification of sedimentary rocks and their analogues]. Saint Petersburg: Nedra, 1998, 521 p.

12. Herrera R.G., Fernando S.V., Hernandez F.P. On the Petrophysics of Carbonate Reservoirs Through Whole Core Analysis. Society of Petroleum Engineers, International Petroleum Conference and Exhibition of Mexico, 10-13 October. Veracruz, Mexico, 1994. DOI: 10.2118/28675-MS

13. Jodry R.L., G Cinilingarian V., Mazzuiloand S.J., Rieke H.H. Chapter 6 Pore Geometry of Carbonate Rocks and Capillary Pressure Curves. *Carbonate Reservoir Characterization: A Geologic-Engineering Analysis*. Part I. Elsevier, Amsterdam, 1992, 670 p. DOI: 10.1016/S0376-7361(09)70129-3

14. Samaniego V.F., Chilingarian G.V., Mazzullo S.J., Rieke H.H. Chapter 10 Fluid Flow Through Carbonate Rock Systems. *Carbonate Reservoir Characterization: A Geologic-Engineering Analysis*. Part I. Elsevier, NewYork, 1992, pp. 439-503. DOI: 10.1016/S0376-7361(09)70133-5

15. Skopec R.A. Proper Coring and Wellsite Core Handling Procedures: The First Step Toward Reliable Core Analysis. *Journal of Petroleum Technology*, 1994, Vol. 46, iss. 04, pp. 280-280. DOI: 10.2118/28153-PA

16. Chilingarin G.V., Mazzullo S.J., Rieke H.H. Carbonate Reservoir Characterization: A Geologic-Engineering Analysis. Part 2. Elsevier, 1996, 993 p.

17. Denney D. Whole Core vs. Plugs: Integrating Log and Core Data to Decrease Uncertainty in Petrophysical Interpretation and Oil-

In-Place Calculations. *Journal of Petroleum Technology*, 2011, vol. 63, iss. 08, pp. 58-60. DOI: 10.2118/0811-0058-JPT.

18. Honarpour M.M., Mahmood S.M. Relative-Permeability Measurements: An Overview. *Journal of Petroleum Technology*, 1998, vol. 40, iss. 08, pp. 15-19. DOI: 10.2118/18565-PA

19. McPhee C.A., Arthur K.G. Relative Permeability Measurements: An Inter-Laboratory Comparison. *European Petroleum Conference*, 25-27 October. London: United Kingdom, 1994, pp. 199-211. DOI: 10.2118/28826-MS

20. Aleksin G.A., Kleshchev A.A., Rossikhin Iu.A. Perspektivy poiskov nefi i gaza na severe Timano-Pechorskoi provintsii [Prospects for oil and gas prospecting in the north of the Timan-Pechora province]. Moscow: VNIIOENG, 1982, 44 p.

21. Dougias R., Rasoul A. Reconsidering Klinkenberg's permeability data. SCA. Norway, 2018, 1 p.

22. Arabjamaloei R., Daniels D., Ebeltoft E. Validation of permeability and relative permeability data using mercury injection capillary pressure data. SCA. Norway, 2018, 2 p.

23. Ampilov Iu.P. Metody geologo-ekonomicheskogo modelirovaniia resursov i zapasov nefi i gaza s uchetom neopredelennosti i riska [Methods for geological and economic modeling of oil and gas resources and reserves, taking into account uncertainty and risk]. Moscow: Geoinformmark, 2002, 201 p.

24. Putilov I.S. Trekhmernoe geologicheskoe modelirovanie pri razrabotke nefiannykh i gazovykh mestorozhdenii [A three-dimensional geological modeling in the development of oil and gas fields]. Perm: Permskii natsional'nyi issledovatel'skii politekhnicheskii universitet, 2011, 72 p.

25. Evgeniy Kovalevskiy Geological Modelling on the Base of Geostatistics. COURSE NOTE. Student Lecture Tour, RUSSIA & CIS, 2011-2012.

26. Metodicheskie ukazaniia po sozdaniiu postoianno deistviushchikh geologo-tekhnologicheskikh modelei nefiannykh i gazonefiannykh mestorozhdenii (Chast' 1. Geologicheskie modeli) [Guidelines for the creation of permanent geological and technological models of oil and gas-oil fields (Part 1. Geological models)]. Moscow: VNIIOENG, 2003.

27. Zakrevskii V.I. Geologicheskoe 3D-modelirovanie [Geological 3D modeling]. Moscow: Maska, 2009, 376 p.

28. Antoshkina A.I. Rifoobrazovanie v paleozoe (sever Urala i sopredel'nye oblasti) [Reef formation in the Paleozoic (northern Urals and adjacent regions)]. Ekaterinburg: Ural'skoe otdelenie Rossiiskoi akademii nauk, 2003.

29. Zhemchugova V.A. Rezervuarnaia sedimentologiya karbonatnykh otlozhenii [Reservoir sedimentology of carbonate deposits]. Moscow: EAGE Geomodel', 2014, 232 p.

30. Bagrintseva K.I. Karbonatnye porodny kolektory nefi i gaza [Carbonate rocks – oil and gas reservoirs]. Moscow: Nedra, 1977, 231 p.

31. Bagrintseva K.I. Usloviia formirovaniia i svoystva karbonatnykh kolektorov nefi i gaza [Formation conditions and properties of carbonate reservoirs of oil and gas]. Moscow: Rossiiskii gosudarstvennyi gumanitarnyi universitet, 1999, part II, 285 p.

32. Beliaeva N.V., Korzun A.L., Petrova L.V. Model' sedimentatsii fransko-turmeiskikh otlozhenii na severo-vostoke Evropeiskoi platformy (v svyazi s formirovaniem rifovykh rezervuarov) [Model of sedimentation of the Frasco-Tournaisian sediments in the northeast of the European Platform (in connection with the formation of reef reservoirs)]. Saint Petersburg: Nauka, 1998, 154 p.

33. Gmid L.P., Levi S.Sh. Atlas karbonatnykh porod-kolektorov [Atlas of carbonate reservoir rocks]. *Trudy Vserossiiskogo nefiyanogo nauchno-issledovatel'skogo geologorazvedochnogo instituta*. Leningrad: Nedra, 1972, iss. 313, 176 p.

34. Dmitrieva E.V., Ershova G.I. et al. Atlas tekstur i struktur osadochnykh gornykh porod. Chast' 2. Karbonatnye porodny [Atlas of textures and structures of sedimentary rocks. Part 2. Carbonate rocks]. Moscow: Nedra, 1969, 700 p.

35. Lider M.R. Sedimentologiya. Protsessy i produkty [Sedimentology. Processes and products]. Moscow: Mir, 1986, 439 p.

36. Maslov V.P. Atlas porodoobrazuiushchikh organizmov (izvestkovykh i kremnevyykh) [Atlas of rock-forming organisms (calcareous and flint)]. Moscow: Nauka, 1973, 268 p.

37. Obstanovki osadkonakopleniia i fatsii [Sedimentary environments and facies]. Ed. Kh. Redinga. Moscow: Mir, 1990, vol. 2, 384 p.

38. Selli R.Ch. Drevnie obstanovki osadkonakopleniia [The ancient depositional environment]. Moscow: Nedra, 1989, 296 p.

39. Fortunatova N.K., Kartseva O.A., Baranova A.V., Agafonova G.V., Ofman I.P. Atlas strukturnykh komponentov karbonatnykh porod [Atlas of structural components of carbonate rocks]. Moscow: Vserossiiskii nefiyanoi nauchno-issledovatel'skii geologorazvedochnyi institut, 2005, 440 p.

40. Chekhovich P.A. Karbonatnye platformy v rannepaleozoiskikh osadochnykh basseynakh. Sedimentatsionnye kharakteristiki i metody izucheniia [Carbonate platforms in the Early Paleozoic sedimentary basins. Sedimentation characteristics and study methods]. *Zhizn' Zemli. Geologiya, geodinamika, ekologiya, muzeologiya. Sbornik nauchnykh trudov Muzeia zemlevedeniia*. Moscow: Moskovskii gosudarstvennyi universitet, 2010, vol. 32, pp.104-132.

41. Maurice E. Tucker, Wright V. Paul. Carbonate sedimentology. Blackwell Science Ltd, 1990, 484 p.

42. Montgomery D.C., Peck E.A. Introduction to liner regression analysis. New York: John Wiley & Sons, 1982, 504 p.

43. Watson G.S. Statistic on spheres. New York: John Wiley and Sons, Inc., 1983, 238 p.

44. Yarus J.M. Stochastic modeling and geostatistics. AAPG. Tulsa, Oklahoma, 1994, 231 p.

45. Putilov I.S., Kozlova I.A., Fil'kina N.A. Ispol'zovanie metodov litologo-fatsial'nogo analiza dlia utochneniia geologicheskogo stroeniia karbonatnykh zalezhei mestorozhdenii Solikamskoi depressii [Using of methods of lithologic-facial analysis to specify geological structure of carbonate deposits of Solikamsk depression]. *Neftepromyslovoe delo*, 2010, no. 7, pp. 32-36.

Библиографический список

1. Губайдуллин М.Г., Белозеров И.П., Юрьев А.В. Экспериментальные исследования относительных фазовых проницаемостей и коэффициента вытеснения нефти водой в сложнопостроенных коллекторах // Геология, геофизика и разработка нефтяных и газовых месторождений. – 2017. – № 2. – С. 49–52.

2. Двухфазная фильтрация в трансверсально-изотропной пористой среде. Теория и эксперимент / М.Н. Дмитриев, В.В. Кадет, М.Н. Кравченко, С.Г. Россохин // Известия РАН. – 2004. – № 4. – С. 92–97.

3. Экспериментальное изучение фильтрационных свойств анизотропных коллекторов углеводородного сырья / Н.М. Дмитриев, А.Н. Кузьмичев, Н.Н. Михайлов, В.М. Максимов // Бурение и нефть. – 2015. – № 11. – С. 6–9.

4. Желтов Ю.В., Кудинов В.И., Малофеев Г.Е. Разработка сложнопостроенных месторождений вязкой нефти в карбонатных коллекторах. – М.: Нефть и газ, 1997. – 387 с.

5. Зайнутдинов Р.С. Совершенствование метода определения остаточной нефтенасыщенности пластов по керну для оценки коэффициентов вытеснения нефти водой: дис. ... канд. техн. наук: 05.15.06. – Уфа, 1998. – 162 с.

6. Зубков М.Ю., Микулина О.И., Пушин А.В. Результаты исследований относительных фазовых проницаемостей разновозрастных продуктивных отложений Красноленинского месторождения // Вестник недропользования Ханты-Мансийского автономного округа. – 2012. – № 25. – С. 42–52.

7. Маскет М. Течение однородных жидкостей в пористой среде. – М.: Изд-во НИЦ «Регулярная и хаотическая динамика», 2004. – 629 с.

8. Изучение остаточного нефтенасыщения разрабатываемых пластов / Н.Н. Михайлов, А.В. Джемесюк, Т.Н. Кольчицкая, Н.А. Семенова. – М.: Изд-во ВНИИОЭНГ, 1990. – 59 с.

9. Тульбович Б.И. Методы изучения пород-коллекторов нефти и газа. – М.: Недра, 1979. – 301 с.

10. Некоторые результаты оценки влияния способов экстракции нефтенасыщенных карбонатных пород на их коллекторские свойства / Н.Ш. Хайрединов, А.А. Губайдуллин, Е.А. Юдинцев, С.А. Блинов // Труды ТатНИПИнефть. – Бугульма, 1987. – № 60. – С.103–109.

11. Шванов В.Н., Фролов В.Т., Сергеева Э.И. Систематика и классификация осадочных пород и их аналогов. – СПб.: Недра, 1998. – 521 с.

12. Herrera R.G., Fernando S.V., Hernandez F.P. On the Petrophysics of Carbonate Reservoirs Through Whole Core Analysis // Society of Petroleum Engineers, International Petroleum Conference and Exhibition of Mexico. 10–13 October. – Veracruz, Mexico, 1994. DOI: 10.2118/28675-MS

13. Pore Geometry of Carbonate Rocks and Capillary Pressure Curves / R.L. Jodry, G.V. Cinilingarian, S.J. Mazzulloand, H.H. Rieke // Carbonate Reservoir Characterization: A Geologic-Engineering Analysis. – Part I. – Elsevier, Amsterdam, 1992. – 670 p. DOI: 10.1016/S0376-7361(09)70129-3

14. Fluid Flow Through Carbonate Rock Systems / V.F. Samaniego, G.V. Chilingarian, S.J. Mazzullo, H.H. Rieke // Carbonate Reservoir Characterization: A Geologic-Engineering Analysis. – Part I. – Elsevier, New York, 1992. – P. 439–503. DOI: 10.1016/S0376-7361(09)70133-5

15. Skopec R.A. Proper Coring and Wellsite Core Handling Procedures: The First Step Toward Reliable Core Analysis // J. Pet. Tech. – 1994. – April. – 280 p. DOI: 10.2118/28153-PA

16. Chilingarin G.V., Mazzullo S.J., Rieke H.H. Carbonate reservoir characterization: a geologic – engineerin analysis. – Part 2. – Elsevier, 1996. – 993 p.

17. Denney D. Whole Core vs. Plugs: Integrating Log and Core Data to Decrease Uncertainty in Petrophysical Interpretation and Oil-In-Place Calculations // Journal of Petroleum Technology. – 2011. – Vol. 63. – SPE. № 0811-0058-JPT. – P. 58–60. DOI: 10.2118/0811-0058-JPT.

18. Honarpour M.M., Mahmood S.M. Relative-Permeability Measurements: An Overview // Journal of Petroleum Technology. – 1998. – Vol. 40. – SPE. № 18565 – PA. – P. 15–19. DOI: 10.2118/18565-PA

19. McPhee C.A., Arthur K.G. Relative Permeability Measurements: An Inter-Laboratory Comparison // European Petroleum Conference, 25–27 October. – London: United Kingdom, 1994. – P. 199–211. DOI: 10.2118/28826-MS

20. Алексин Г.А., Клещев А.А., Росихин Ю.А. Перспективы поисков нефти и газа на севере Тимано-Печорской провинции. – М.: Изд-во ВНИИОЭНГ, 1982. – 44 с.

21. Dougias R., Rasoul A. Reconsidering Klinkenbergs permeability data. – SCA, Norway, 2018. – 1 p.

22. Arabjamaloei R., Daniels D., Ebeltoft E. Validation of permeability and relative permeability data using mercury injection capillary pressure data. – SCA, Norway, 2018. – 2 p.

23. Ампилов Ю.П. Методы геолого-экономического моделирования ресурсов и запасов нефти и газа с учетом неопределенности и риска. – М.: Геоинформмарк, 2002. – 201 с.

24. Путилов И.С. Трехмерное геологическое моделирование при разработке нефтяных и газовых месторождений. – Пермь: Изд-во Перм. нац. исслед. политехн. ун-та, 2011. – 72 с.

25. Evgeniy Kovalevskiy Geological Modelling on the Base of Geostatistics. COURSE NOTE. – Student Lecture Tour, RUSSIA & CIS, 2011–2012.

26. Методические указания по созданию постоянно действующих геолого-технологических моделей нефтяных и газонефтяных месторождений (Часть 1. Геологические модели). – М.: Изд-во ВНИИОЭНГ, 2003.

27. Закревский В.И. Геологическое 3D-моделирование. – М.: Маска, 2009. – 376 с.

28. Антошкина А.И. Рифообразование в палеозое (север Урала и сопредельные области). – Екатеринбург: Изд-во Уро РАН, 2003.

29. Жемчугова В.А. Резервуарная седиментология карбонатных отложений. – М.: ЕАГЕ Геомодель, 2014. – 232 с.

30. Багринцева К.И. Карбонатные породы – коллекторы нефти и газа. – М.: Недра, 1977. – 231 с.

31. Багринцева К.И. Условия формирования и свойства карбонатных коллекторов нефти и газа. – М.: Изд-во РГГУ, 1999. – Ч. II. – 285 с.

32. Беляева Н.В., Корзун А.Л., Петрова Л.В. Модель седиментации франско-гурнейских отложений на северо-востоке Европейской платформы (в связи с формированием рифовых резервуаров). – СПб.: Наука, 1998. – 154 с.

33. Гмид Л.П., Леви С.Ш. Атлас карбонатных пород-коллекторов // Труды ВНИГРИ. – Л.: Недра, 1972. – Вып. 313. – 176 с.

34. Атлас текстур и структур осадочных горных пород. Ч. 2: Карбонатные породы / Е.В. Дмитриева, Г.И. Ершова [и др.]. – М.: Недра, 1969. – 700 с.

35. Лидер М.Р. Седиментология. Процессы и продукты. – М.: Мир, 1986. – 439 с.

36. Маслов В.П. Атлас породообразующих организмов (известковых и кремневых). – М.: Наука, 1973. – 268 с.

37. Обстановки осадконакопления и фации: в 2 т.: пер. с англ. / под ред. Х. Рединга. – М.: Мир, 1990. – Т. 2. – 384 с.

38. Селли Р.Ч. Древние обстановки осадконакопления: пер. с англ. – М.: Недра, 1989. – 296 с.

39. Атлас структурных компонентов карбонатных пород / Н.К. Фортунатова, О.А. Карцева, А.В. Баранова, Г.В. Агафонова, И.П. Офман. – М.: Изд-во ВНИГРИ, 2005. – 440 с.

40. Чехович П.А. Карбонатные платформы в раннепалеозойских осадочных бассейнах. Седиментационные характеристики и методы изучения // Жизнь Земли. Геология, геодинамика, экология, музеология: сб. науч. тр. Музея земледования. – М.: МГУ, 2010. – Т. 32. – 104–132.

41. Maurice E. Tucker, Wright V. Paul. Carbonate sedimentology. – Blackwell Science Ltd, 1990. – 484 p.

42. Montgomery D.C., Peck E.A. Introduction to liner regression analysis. – New York: John Wiley & Sons, 1982. – 504 p.

43. Watson G.S. Statistic on spheres. – New York: John Wiley and Sons, Inc., 1983. – 238 p.

44. Yarus J.M. Stochastic modeling and geostatistics // AAPG. – Tulsa, Oklahoma, 1994. – 231 p.

45. Путилов И.С., Козлова И.А., Филькина Н.А. Использование методов литолого-фациального анализа для уточнения геологического строения карбонатных залежей месторождений Соликамской депрессии // Нефтепромысловое дело. – 2010. – № 7. – С. 32–36.

Please cite this article in English as:

Putilov I.S., Vinokurova E.E., Guliaeva A.A., Yuzhakov A.L., Popov N.A. Creation of a Conceptual Geological Model based on Lithological-Petrographic Research on the Example of the Permo-Carboniferous Deposit of the Usinskoe Deposit. *Perm Journal of Petroleum and Mining Engineering*, 2020, vol.20, no.3, pp.214-222. DOI: 10.15593/2712-8008/2020.3.2

Просьба ссылаться на эту статью в русскоязычных источниках следующим образом:

Создание концептуальной геологической модели, основанной на литолого-петрографических исследованиях, на примере пермокарбоневой залежи Усинского месторождения / И.С. Путилов, Е.Е. Винокурова, А.А. Гуляева, А.Л. Южаков, Н.А. Попов // Недропользование. – 2020. – Т.20, №3. – С.214–222. DOI: 10.15593/2712-8008/2020.3.2